

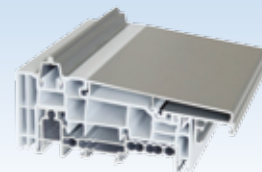


WINDOW TECHNOLOGY
DOOR TECHNOLOGY
AUTOMATIC ENTRANCE SYSTEMS
BUILDING MANAGEMENT SYSTEMS



TIMBER, PVC, AND ALUMINIUM WINDOWS AND DOORS

Programme of lift-slide fittings



Securing technology for you



Modular system of lift-slide fittings

State-of-the-art solutions for individual requirements



Courtesy of photographer Oliver Schuster, D-Stuttgart, pages 1, 2, 4, 15

Tradition obliges – setting the highest design and quality standards

Group of companies

Gretsch-Unitas

In 1958, Gretsch-Unitas was the first company to develop and launch a lift-slide system. This technical innovation shaped a market trend and set standards with regard to profile geometry, function, and quality which still apply today.

Innovative strength for more than 50 years

As a result of the consistent further development of lift-slide fittings to suit market requirements, a multitude of top-quality fitting solutions including profile system-related variants is available today for all customary joinery materials.

Lift-slide systems – more than just fittings

With their lift-slide fittings, GU offer a modular system allowing to fulfill the individual demands of end users with regard to safety, convenience, and functionality. The modular system also provides for state-of-the-art upgrades of lift-slide elements existing already.

Individual and sustainable system solutions

In accordance with our declared system approach, we ensure that for each profile system an individual, market-conform hardware solution can be offered in the form of a complete CE-certified system. In the capacity of system provider for timber elements, Gretsch-Unitas is in a position to pursue completely new paths and to meet whatever requirements arise in the market.

**Lift-slide elements
creating space & translucence** Page 04
Comfortable and secure living areas



Basics Page 06
Boundless application options
Versatile range of lever handles
Optimum adaptation to profile systems
through choice of thresholds
High-class runners and lift-locking gears



Security Page 10
Optional ways to enhance the security
of lift-slide elements



Convenience Page 11
Comfortable & safe room ventilation
Easy opening and closing



Renovation Page 15
Making renovation a piece of cake
– concept & solutions



Lift-slide elements creating space and translucence

Safe and convenient living areas



Outstanding operating convenience and functionality leave nothing to be desired

Classic lift-slide elements with fittings from Gretschi-Unitas have always provided for well-lit rooms and a pleasant living atmosphere.

The Group of Companies now presents a new generation of fittings meeting any demands when it comes to convenient operation, burglar inhibition and variable room ventilation.

'Simple, fast, safe' is the name of the game when it comes to window and door fabrication. The fabricator-friendly design of the fitting components, the versatile range of accessories and auxiliary means as well as the elaborate technical documentation enable products from Gretschi-Unitas to be installed easily and safely in no time.

Overview of lift-slide fitting types

	Timber		PVC		Aluminium	
Type of element	GU-934 door	GU-934 window	GU-937 door	GU-937 window	GU-934 door/window	GU-934 door/window
Sash weight, kg	up to 300*	up to 300*	up to 150	up to 150	up to 300*	up to 300*
Sash width, mm	700 – 3300	700 – 3300	700 – 3300	700 – 3300	to profile system	to profile system
Sash height, mm	1851 – 3250	850 – 1865	1851 – 3250	850 – 1865	to profile system	to profile system
Number of sashes	2 to 6	2 to 4	2 to 6	2 to 4	2 to 4	2 to 6

* With tandem runner up to 400 kg. Maximum of 600 kg upon request.

All fitting variants boast the following features:

- Outstandingly smooth and quiet sash movement
- Delightfully easy operation even of large and heavy sashes thanks to the perfect interplay of running carriages, gear and lever handle
- Wide range of optional accessories to enhance convenience
- Gears for sash heights up to 3250 mm
- Optimum thermal break in the bottom area achieved with the GU-thermostep threshold
- Alternative threshold solutions requiring little material input provide for manifold applications
- High burglar inhibition as a standard due to rugged fitting components
- Extra burglar inhibition by means of optional security components
- Optimum protection against corrosion with the surface sealing ferGUard*silver
- Easily operable lever handles in appealing design

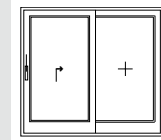
CE marking for windows and window doors:

At our premises we provide fabricators with the possibility of acquiring the prerequisites needed for the CE marking of timber windows and window doors. For further details please call +49 (0) 71 56 3 01 2 08.

Sash arrangement schemes A to L

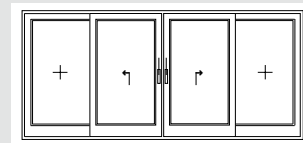
Scheme A

1 sliding sash
1 fixed glazing
Drawing shows handle lh



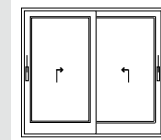
Scheme C

2 sliding sashes
2 fixed glazings
Drawing shows handle lh and rh



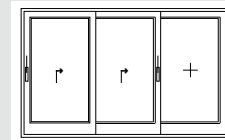
Scheme D

2 sliding sashes
Drawing shows handle lh and rh



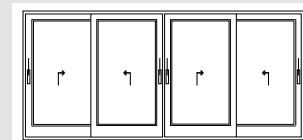
Scheme E

2 sliding sashes
1 fixed glazing
Drawing shows handle lh



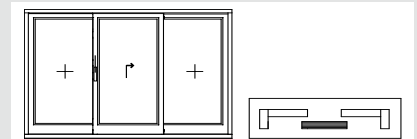
Scheme F

4 sliding sashes
Drawing shows handles lh and rh



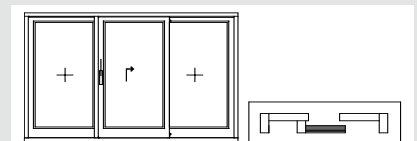
Scheme G1 symmetrical

1 sliding sash,
2 fixed glazings
Drawing shows handle lh



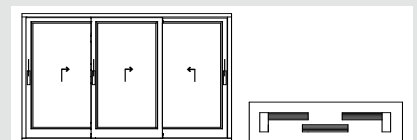
Scheme G1 asymmetrical

With mullion
1 sliding sash
2 fixed glazings
Drawing shows handle lh



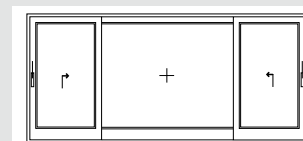
Scheme H

3 sliding sashes
(like scheme G symmetrical)
Drawing shows handles lh and rh



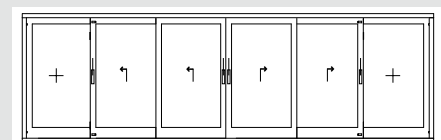
Scheme K

2 sliding sashes
1 fixed glazing
Drawing shows handle lh and rh



Scheme L

4 sliding sashes
2 fixed glazings
Drawing shows handles lh and rh



Basics

Versatile handle variants in classical design



Stylish lever handles for comfortable operation

For operating lift-slide elements, the following handle variants from our series DIRIGENT, RONDO and FORTE are available:

- Inside handle, lockable as an option
- Inside handle, removable
- Set of inside/outside handle, lockable on both sides as an option

Easy retrofitting:

All existing handles can be exchanged for a new and different lever handle model at any time!



Series DIRIGENT

Aluminium, stainless steel or brass variants depending on the handle series



Series FORTE



Series RONDO



Series RONDO

Elongated lever handle with reduced torque for minimal operating effort



Frame colours matching with series RONDO/stainless steel



brown



mahogany



black

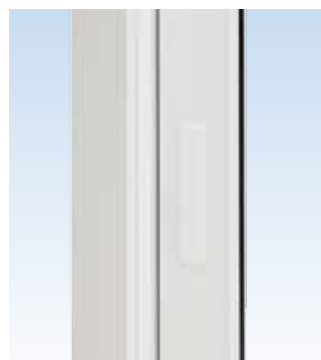
Compatible profile cylinders from the BKS range of locking cylinders



Flush pull DIRIGENT/aluminium



Flush pull/stainless steel

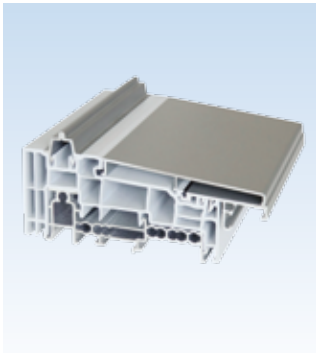


Cover rosette

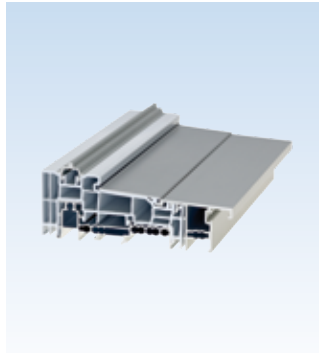
Aluminium, stainless steel or brass variants depending on the handle series

Basics

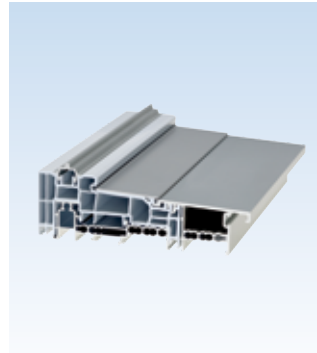
Optimum adaptation to profile systems through choice of thresholds



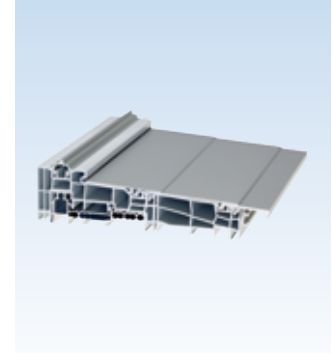
GU-thermostep for IV 56 up to IV 68 (here with 'Comfortprofil')



GU-thermostep for IV 78



GU-thermostep for IV 88 up to IV 92



GU-thermostep for up to IV 110

Thresholds – energy-efficient, barrier-free, retrofittable

The thermally broken threshold GU-thermostep considerably reduces the heat flow at the bottom of lift-slide elements, thus saving a considerable amount of energy.

As a matter of course, the thresholds are suited for use with all timber systems and market-leading PVC systems, and for different sash arrangement schemes. The adaptation to the particular profile system is achieved with a combination of various extension profiles.

- Identical threshold base for timber and PVC doors
- The complete outside (weather side) is protected by an aluminium profile
- Flexible modular system: threshold, variety of drip rails and running rails for snap-in attachment
- All running rails can be exchanged subsequently
- Anti-moisture foil attached directly to the drip rail
- Suitable for "Accessible Dwellings" to DIN 18025

Threshold types									
Suitable for	Timber profiles (sash thickness in mm)							PVC profiles	Height
	56 mm	68 mm	78 mm	88 mm	90 mm	92 mm	110 mm		
GU-thermostep	■	■	■	■	■	■	■	■	67 mm
GU-threshold 47	■	■	-	-	-	-	-	■	47 mm
GU-flatstep	■	■	-	-	-	-	-	■	22 mm
GU-timberstep	■	■	■	-	-	-	-	-	22 mm

Lift-slide runners – the new easiness

Lift-slide runners from Gretsch-Unitas convince with a well-conceived design and outstanding product quality. They guarantee ease of operation and comfortable running smoothness throughout the whole application range.

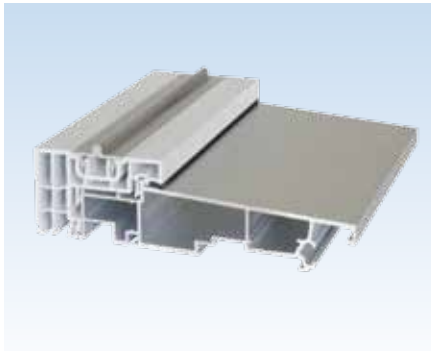


Lift-slide runner GU-934 with faceGUard finish

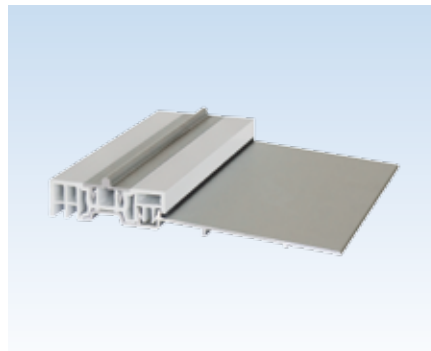
Lift-slide runner GU-934 with ferGUard*silver finish



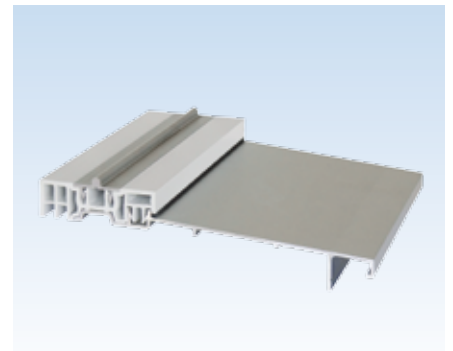
Lift-slide runner GU-937 with ferGUard*silver finish



GU-threshold 47



GU-flatstep

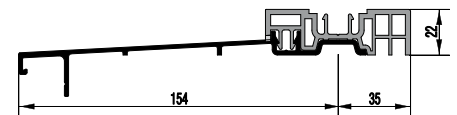
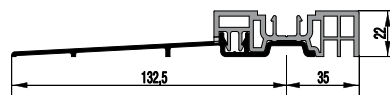
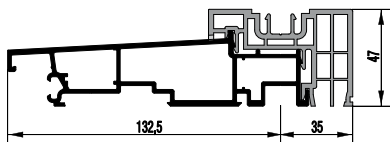


GU-timberstep

Thresholds – modular design for alternative solutions

For each particular profile system, the modular threshold design enables the use of the same corner connector and accessories regardless of which of the threshold types shown here on page 9 is applied.

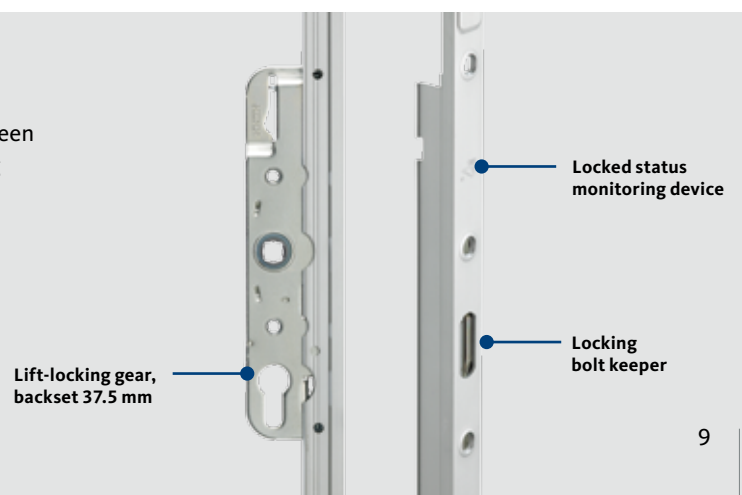
- Running rails can be exchanged subsequently
- Due to small heights especially useful in the context of re-using existing buildings.



Kit of running rails																	
Scheme											Running rail			Meeting stile			
A	C	D	E	FF	G1	G2	G3	H	K	L	5 mm	10 mm	15 mm	10 mm	22 mm	25 mm	28 mm
■	■	■	■	■	■	■	■	■	■	■	■	■	■	■	■	■	■
■	■	■	-	■	■	■	■	■	■	-	■	■	■	■	-	-	■
■	■	-	-	-	■	■	■	-	-	-	■	■	■	■	-	-	■
■	■	-	-	-	■	■	■	-	-	-	■	■	■	■	-	-	■

Lift-locking gear – uncompromising precision and quality

Lift-locking gears from Gretsch-Unitas stand out due to their extreme loadability and durability. With their design having been optimised constantly throughout the decades, GU lift-locking gears always have set the standard in the market.



Security

Enhancing the security of lift-slide elements



Adjust your lift-slide element to meet your individual security requirements!

Insufficiently secured windows and doors make it easy for unwelcome visitors to intrude into your home. Windows and doors constitute the weak spots in a building unless they are fitted with adequate security components.

Half of all burglar attempts made on window and door elements with robust security fittings are abandoned within a few minutes. The police therefore recommend burglar inhibiting fittings as the most efficient safeguard against housebreakers.

The choice of security components shown below will make your lift-slide elements comply with today's security requirements, regardless of whether it is in the context of new construction or reuse of existing buildings.

1. Anti-lift security device

2. Locked status monitoring device

3. Lever handle Se, lockable

4. Bottom keeper

5. Security sealing profile Se

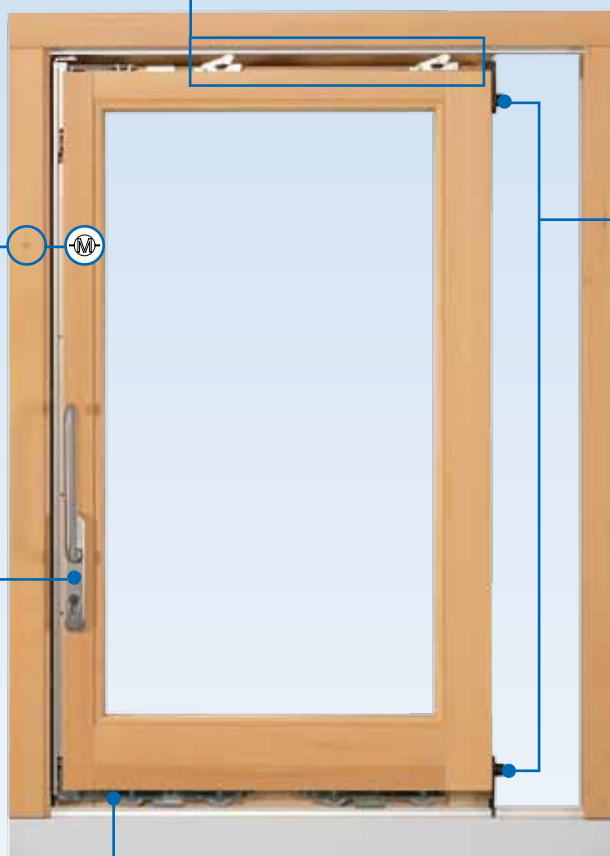
2 Magnetic switch for locked status monitoring
Gears with mark for magnetic switch can be upgraded easily.



3 Lever handle Se, lockable gear PZ
Handle sets Se with profile cylinder on the inside or on both sides can be mounted subsequently at any time, since all lift-locking gears are prepared for actuation via profile cylinder as a standard.



1 Anti-lift security device
protects the sash from being lifted by force.



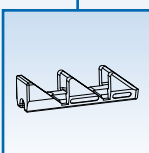
Further information about renovation can be found in our brochure "Making renovation a piece of cake – Lift-slide elements of timber"

5 Security sealing profile Se
Installed at the meeting stile, the sealing profile Se provides enhanced burglar inhibition: two robust aluminium profiles engaging into one another prevent the sashes from being forced open.



Slit ventilation module, WK2-tested
The sash is securely locked even in ventilation position.

4 Bottom keeper
allows for different ventilation positions of the sash (for units without slit ventilation module).



Slit ventilation module

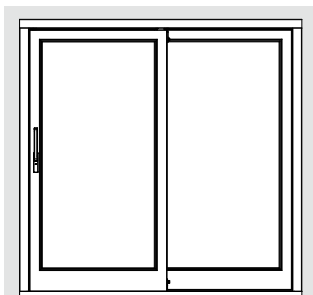
The recently developed slit ventilation system offers convenient room ventilation plus the extra benefit of a burglary protection feature. Elements fitted with a slit ventilation module are ...

- locked securely even in ventilation position
- tested to ENV 1627 for burglar resistance grade WK2 (even in ventilation position).

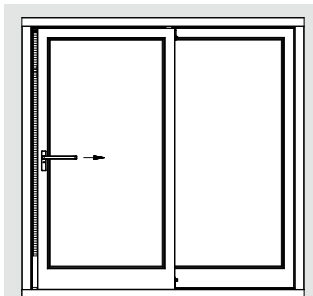
Additional benefits:

The slit ventilation module can be retrofitted in existing lift-slide units GU-934 and GU-937 (timber and various PVC systems) with minimal effort.

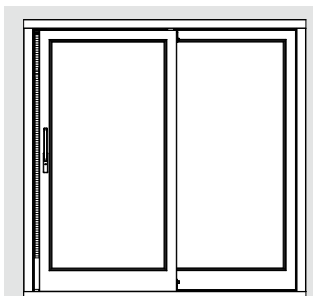
- Ventilation grid profile made from anodised aluminium, with integral insect mesh
- Sealing towards the top and the threshold with optimally adapted connectors



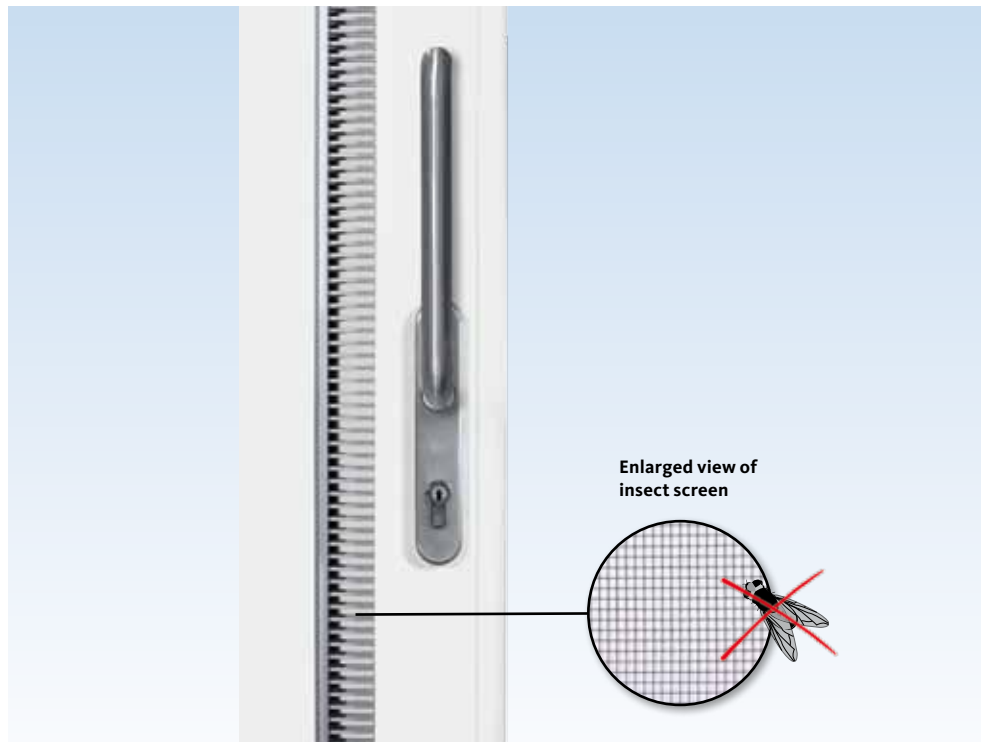
Closing position:
Sash is closed and locked



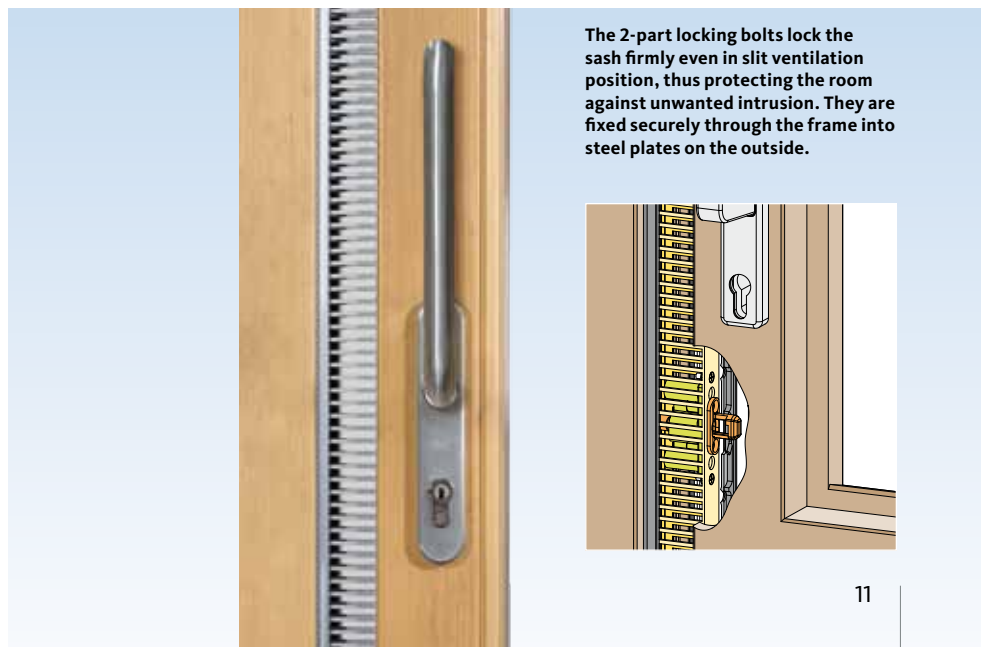
Sliding position:
Handle at 90° position



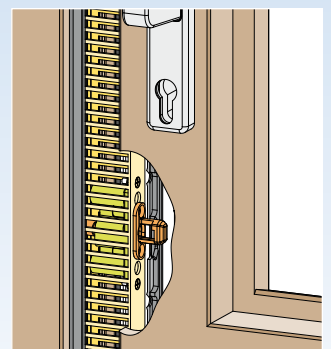
Slit ventilation position:
Sash is locked



Enlarged view of
insect screen



The 2-part locking bolts lock the sash firmly even in slit ventilation position, thus protecting the room against unwanted intrusion. They are fixed securely through the frame into steel plates on the outside.



Convenience

Easy opening and closing



HS-*Master* CONCEALED for timber elements



HS-*Master* CONCEALED for aluminium elements

Lift-slide system HS-*Master* CONCEALED – electric drive concealed in the profile

An exceptional highlight in our range of motor-driven lift-slide fittings is the new type HS-*Master* CONCEALED which is completely integrated and concealed in the frame profile thanks to the linkage being positioned in line with the gear.

- Meets the highest demands with regard to appearance and design
- The system including all safety components is tested by DEKRA
- Suitable for "Accessible Dwellings" to DIN 18025
- Tailor-made and preassembled unit
- Same easy operation as with the standard HS-*Master*
- Construction and functioning analogous to the standard HS-*Master*



Lift-slide system HS-*Master* CONCEALED

Application range	
	HS- <i>Master</i> CONCEALED Scheme A
Sash weight (kg)	up to 300 kg
Sash width (mm)	1200 – 3300
Sash height (mm)	1792 – 2712



HS-*Master* Scheme A



HS-*Master* Scheme C

Lift-slide system HS-*Master* – electric drive attached to the frame

Tried-and-tested lift-slide fittings combined with modern drive technology – HS-*Master* meets the demand for high-convenience living and provides for solutions in compliance with DIN 18025 ("Accessible Dwellings").

All sash operations (lifting, sliding to the desired opening width, closing) are motor-driven, whilst the sash is free of current and cables.

The HS-*Master*'s unrivalled safety technology provides for its outstandingly safe operation. The DEKRA-tested HS-*Master* drive features a load break switch as a standard; additional safety devices can of course be retrofitted as an option.

HS-*Master* is recommended for use in hospitals, retirement and care homes, handicapped facilities, and kindergartens. The system is operated by

- wall switch/key switch
- radio remote control
- push & go
- lever handle

Existing GU-934 lift-slide elements can be retrofitted with a HS-*Master* system easily.



Lift-slide system HS- <i>Master</i>		
Application range		
	HS- <i>Master</i> Scheme A	HS- <i>Master</i> Scheme C
Sash weight (kg)	up to 300	up to 300
Sash width (mm)	950 – 3300	950 – 3300
Sash height (mm)	1830 – 2765	1830 – 2765

Convenience

Safe operation of large and heavy elements



HS-SPEED *Limiter* is discretely concealed under a cover profile



Thanks to its mature safety technology, the HS-SPEED *Limiter* excludes the risk of injuries that might occur when heavy sliding sashes are moved (picture shows a transparent cover revealing the mechanism)

Lift-slide element with HS-SPEED *Limiter*

When a large and heavy lift-slide element is opened or closed, the sash gains momentum due to the built-up kinetic energy and can only be slowed down with difficulty.

The HS-SPEED *Limiter* prevents the sliding sash from accelerating too fast, thus avoiding personal injury and damage to the structure.

The system is therefore especially suited for buildings with enhanced safety requirements, for children's facilities such as, e.g., elementary schools and kindergartens, and for all public facilities subject to any accident prevention regulation.

Further benefits:

- The usual operating comfort is not affected
- Simple installation
- Retrofittable
- Suitable for elements of timber, PVC, and aluminium

HS-SPEED *Limiter* for lift-slide element GU-934 / GU-937

Application range		
	GU-934	GU-937
Max. sash width	3300 mm	2200 mm
Max. sash height	2765 mm	2765 mm
Max. sash weight	400 kg	150 kg

For sash arrangement schemes A, C, G and K.



Yesterday



Today

State-of-the-art upgrade of lift-slide elements – safe, easy, and fast

How to make a lift-slide element function again as if it were new and perform a state-of-the-art upgrade at the same time is explained in a separate Gretschi-Unitas brochure concerned with renovation.

There are numerous ways to readjust old lift-slide elements to the requirements of today, be it with regard to convenience, safety, or functionality. With our renovation initiative we furthermore intend to provide fabricators with the possibility to acquire successive orders.

We provide special documentation helping fabricators to convert their end user customers to our modular lift-slide renovation system which spares them dirty and noisy demolition or plastering work.

Convenience and stylishness

- Lift-locking gear
- Runners
- GU thresholds
- Lever handles
- Motor-driven lift-slide fittings
- **HS-Master**
- **HS-SPEED Limiter**

Security

- Anti-lift security device
- Locked status monitoring device
- Bottom keeper
- Lever handles Se
- Meeting stile sealing profile Se

Functionality

- Lift-locking gear
- Runners



WINDOW TECHNOLOGY
DOOR TECHNOLOGY
AUTOMATIC ENTRANCE SYSTEMS
BUILDING MANAGEMENT SYSTEMS

Gretsch-Unitas GmbH
Baubeschläge
Johann-Maus-Str. 3
D-71254 Ditzingen
Phone +49(0)7156 3 01-0
Fax +49(0)7156 3 01-293

BKS GmbH
Heidestr. 71
D-42549 Velbert
Phone +49(0)2051 201-0
Fax +49(0)2051 201-431

www.g-u.com

Securing technology for you

